



## THE SOCIAL ENTERPRISE

### Improving Lives and Communities

Coleman Data Solutions is a social enterprise, wholly owned by Coleman Professional Services. All proceeds support behavioral rehabilitation and mental health services in the state of Ohio.

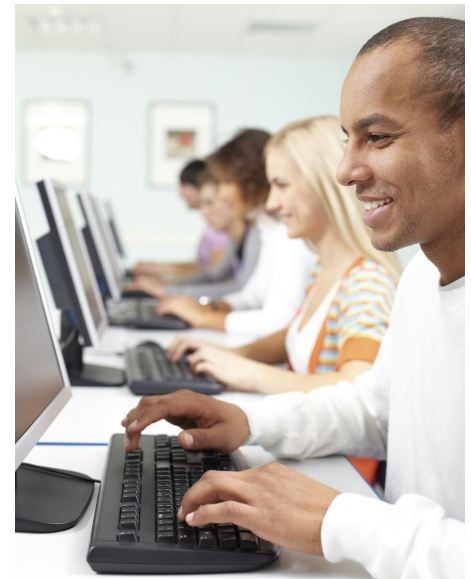
The mission of Coleman Data Solutions is to generate revenue to fund services as well as employ persons with disabilities in an integrated workforce. When you do business with Coleman, you are helping us achieve our goal of helping others.



Coleman is also committed to assisting organizations in becoming more environmentally friendly. Coleman's services are part of moving to a paperless environment. The Coleman Social Enterprise model has a proven impact on improving the community.

### Facts About Coleman

- One of the largest data management companies in Ohio.
- Fully integrated workforce, creating a workplace where both non-disabled and disabled work in unison.
- Provides services for comprehensive Data and Document Lifecycle Management.
- Coleman Data Solutions is an enterprise of Coleman Professional Services, a nationally recognized not for profit provider of behavioral health and rehabilitation programs that improve the lives of individuals, families and businesses in Northeast Ohio.



### Why Choose Coleman?

When you work with Coleman Data Solutions for your document imaging, data entry or other services, you are giving back to the community while also getting industry leading services that your organization needs. It is a true Win/Win.